



# PANEL

High Gloss | Soft Touch | Power Gloss | Çizilmez Akrilik / *Anti Scratch*





## “Eşsiz tasarımlar için çok yönlü bir çözüm”

AGT'nin MDF'si ile üretilen AGT Panel, stok renklerin haricinde sipariş verilen renklerle de hazırlanarak eşsiz tasarım seçenekleri sunar. Mobilya gövdelerinde, profil kapak çerçeve içinde, duvar panosu olarak, çekmece tabanlarında, mobilya arkılığı olarak ve daha birçok formda kullanılabilir.

AGT Panel tam dört farklı yüzey seçeneğiyle karşımıza çıkıyor.

**High Gloss, Soft Touch, Power Gloss** ve **Akrilik**.

Hepsi de farklı ihtiyaçlar için tasarlanmış üstün kaliteli ürünler.



## “An all purpose solution for unique designs”

*AGT panel, produced with AGT's own MDF, presents unique design alternatives with not only stock decors but also ordered decors. It can be used as furniture bodies, profile tops in frames, wall panels, drawer base, furniture backrest and many forms.*

*AGT panel is emerged us with its four different surface alternatives;*

***High Gloss, Soft Touch, Power Gloss*** and ***Acrylic***.

*All of them are designed for different needs.*

AGT

Panel



# HIGH GLOSS

Üstün yüzey kalitesi, bu kalitenin yanında kolay işlenebilme özelliği ve farklı renk alternatifleri... Tüm bu özellikleriyle High Gloss her tasarımın bir vazgeçilmezi...

With its high surface quality, beside this quality, its easy workability features and different color alternatives... With all these features, High Gloss is indispensable of every design.



# TEKNİK ÖZELLİKLER / TECHNICAL SPECIFICATIONS

## Fiziksel ve Mekanik Testler / Physical and Mechanical Tests

ÖZELLİKLERİ / FEATURES	BİRİM / UNIT	DEĞER / VALUE	TEST MODU / TEST METHOD
<b>Yoğunluk</b> Density	kg/m <sup>3</sup>	7.7-12-16-18 mm: 750 ± 7% 22-25-30 mm: 720 ± 7%	EN 323
<b>Kalınlık Toleransı</b> Thickness Tolerance	mm	7.7-12-16-18 mm: ± 0,20 mm 22-25-30 mm: ± 0,30 mm	EN 324-1 EN 622-1
<b>En ve Boy Toleransı</b> Aspect Tolerance	mm/m	± 2 mm/m, maksimum ± 5 mm	EN 324-1 EN 622-1
<b>Karelik Toleransı</b> Squareness Tolerance	mm/m	2 mm/m	EN 324-2 EN 622-1
<b>Kenar Düzlüğü Toleransı</b> Side Smoothness Tolerance	mm/m	1.5 mm/m	EN 324-2 EN 622-1
<b>Kalınlıkta Şişme 24 Saat</b> Inflation in Thickness 24 Hours	%	7.7 mm ≤ 17% 12 mm ≤ 15% 16-18 mm ≤ 12% 22-25-30 mm ≤ 10 %	EN 317 EN 622-5
<b>Eğilme Dayanımı</b> Inflection Resistance	N/mm <sup>2</sup>	7.7 mm ≥ 23 N/mm <sup>2</sup> 12 mm ≥ 22 N/mm <sup>2</sup> 16-18 mm ≥ 20 N/mm <sup>2</sup> 22-25-30 mm ≥ 18 N/mm <sup>2</sup>	EN 310 EN 622-5
<b>İç Yapışma</b> Inner Adhesion	N/mm <sup>2</sup>	7.7 mm ≥ 0,65 N/mm <sup>2</sup> 12 mm ≥ 0,60 N/mm <sup>2</sup> 16-18-22-25-30 mm ≥ 0,55 N/mm <sup>2</sup>	EN 319 EN 622-5
<b>Formaldehit İçeriği</b> Formaldehyde Content	mg/100g	≤ 8 mg/100g	EN 120 EN 622-1
<b>Nem İçeriği</b> Humid Content	%	4 ÷ 11%	EN 322 EN 622-1

## PAN122

MD / MDF

122cmx280cm Panel

En / Width: 1220 mm Boy / Length: 2800 mm Kalınlık / Thickness: 8 - 16 - 18 mm

### 1. Grup Renkler / 1. Group Colors



382 Bella Gold / Matt Bella Gold

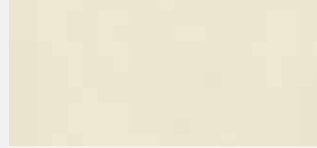
### 2. Grup Renkler / 2. Group Colors



391 Mat Stone Bej / Matt Stone Beige



390 Mat Stone Gri / Matt Stone Grey



381 Mat Krem Deri / Matt Cream Leather



380 Mat Kahve Deri / Matt Brown Leather



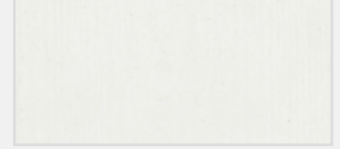
378 Mat Açık Keten / Matt Light Linen



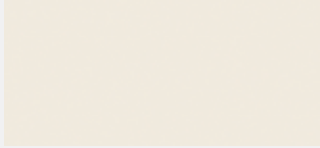
379 Mat Koyu Keten / Matt Dark Linen



374 Beyaz / Gri Country / White / Grey Country



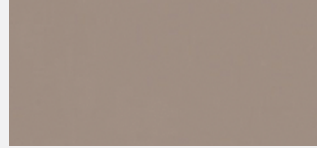
601 HG Beyaz / HG White



647 HG Bianco / HG Bianco



605 HG Krem / HG Cream



623 HG Vizyon / HG Vison



878 HG Yeni Vizyon / HG New Vison



645 HG Zeytin Yeşili / Olive Green



600 HG Kırmızı / HG Red



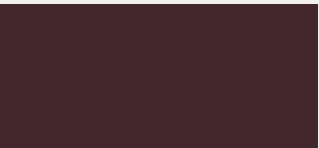
612 HG Turuncu / HG Orange



615 HG Bordo / HG Bordeaux



622 HG Mürdüm / HG Damson



620 HG Kahve / HG Brown



606 HG Siyah / HG Black

AGT

Panel

# ÜRETİM RENKLERİ / PRODUCTION DECORS

PAN122

MD / MDF

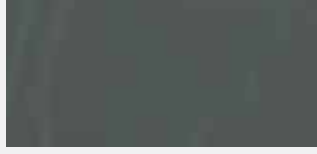
122cmx280cm Panel

En / Width: 1220 mm Boy / Length: 2800 mm Kalınlık / Thickness: 8 - 16 - 18 mm

## 3. Grup Renkler / 3. Group Colors



6001 HG Pera / HG Pera



683 HG Line Gri / HG Line Grey



300 HG İnok / HG Inox



664 HG Dalgalı Beyaz /  
HG Wavy White



665 HG Dalgalı Siyah /  
HG Wavy Black



368 Çöl Kremi /  
Matt Desert Cream



652 HG Emperador Bej /  
HG Emperador Beige



651 HG Emperador Kahve /  
HG Emperador Brown



674 HG Terra Latte /  
HG Terra Latte



653 HG Terra Kahve /  
HG Terra Brown



667 HG Freze Beyaz Akçaağaç /  
HG Milling White Maple



609 HG Beyaz Meşe /  
HG White Oak



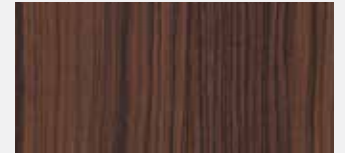
654 HG Alman Meşe /  
HG German Oak



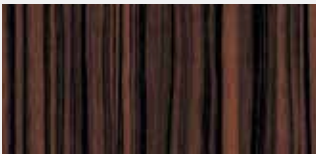
633 HG İmperia /  
HG Imperia



627 HG Milano Ceviz /  
HG Milano Walnut



602 HG Avrupa Tik /  
HG European Teak



604 HG Abanoz /  
HG Ebony



617 HG Oregon Ceviz /  
HG Oregon Walnut



603 HG Metalik Karaağaç /  
HG Metallic Elm



PAN122

MDF

122cmx280cm Panel

En / Width: 1220 mm Boy / Length: 2800 mm Kalınlık / Thickness: 8 - 16 - 18 mm

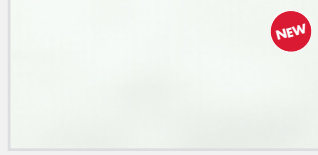
## 4. Grup Renkler / 4. Group Colors



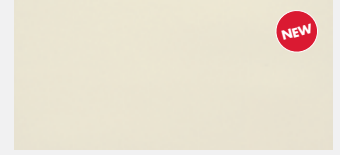
388 Toledo Açık Ahşap /  
Toledo Light Wood



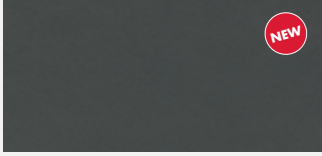
389 Toledo Koyu Ahşap /  
Toledo Dark Wood



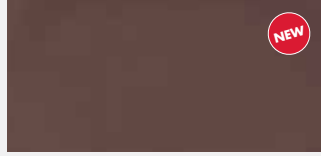
383 Mat Kaşmir Beyaz /  
Matt Cashmere White



385 Mat Kaşmir Krem /  
Matt Cashmere Cream



384 Mat Kaşmir Gold /  
Matt Cashmere Gold



386 Mat Kaşmir Bakır /  
Matt Cashmere Copper



387 Mat Kaşmir Gri /  
Matt Cashmere Grey



694 HG Rubik Beyaz /  
HG Rubic White



696 HG Rubik Kahve /  
HG Rubic Brown



695 HG Rubik Siyah /  
HG Rubic Black



699 HG Metalik Beyaz /  
HG Metallic White



689 HG Metalik Mavi /  
HG Metallic Blue



687 HG Metalik Altın /  
HG Metallic Gold



688 HG Metalik Kahve /  
HG Metallic Brown



698 HG Metalik Etna /  
HG Metallic Etna



608 HG Metalik Antrasit /  
HG Metallic Anthracite

# ÜRETİM RENKLERİ / PRODUCTION DECORS

## 4. Grup Renkler / 4. Group Colors



685 Mat Kaşmir Krem /  
HG Light Linen



686 Mat Kaşmir Bakır /  
HG Dark Linen



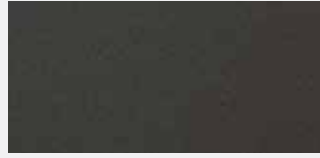
670 HG Galaksi Beyaz /  
HG Galaxy White



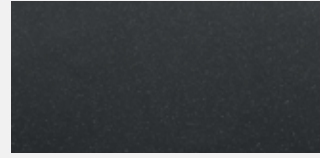
678 HG Galaksi Krem /  
HG Galaxy Cream



640 HG Galaksi Balbuğu /  
HG Galaxy Honey Mist



679 HG Galaksi Dore /  
HG Galaxy Dore



677 HG Galaksi Siyah /  
HG Galaxy Black



681 HG Krem Star /  
HG Cream Star



680 HG Terra Star /  
HG Terra Star



682 HG Rose Star /  
HG Rose Star



675 HG Line İnci /  
HG Line Pearl



676 HG Line Koyu Rose /  
HG Line Dark Rose



662 HG Beyaz Sahara /  
HG White Sahara



663 HG Mürdüm Sahara /  
HG Damson Sahara



661 HG Siyah Sahara /  
HG Black Sahara



671 HG Granit Gri /  
HG Granite Grey



641 HG Crocodile /  
HG Crocodile



635 HG Beyaz Krizantem /  
HG White Krizantem



644 HG Beyaz Sarmaşık /  
HG White Ivy



650 HG Krem Lale /  
HG Cream Tulip

# ÜRETİM RENKLERİ / PRODUCTION DECORS

## 4. Grup Renkler / 4. Group Colors



648 HG Altın Sarmaşık /  
HG Gold Ivy



646 HG Kahve Nature /  
HG Coffee Nature



628 HG Çiçekli Beyaz /  
HG Flower White



629 HG Çiçekli Siyah /  
HG Flower Black



657 HG Ay Tozu Beyaz /  
HG Moon Dust White



658 HG Ay Tozu Siyah /  
HG Moon Dust Black



668 HG Beyaz Hilal /  
HG White Crescent



669 HG Siyah Hilal /  
HG Black Crescent



636 HG Yıldızlı Beyaz Nergis /  
HG White Veneer Narcissus



637 HG Yıldızlı Siyah Nergis /  
HG Black Veneer Narcissus



621 HG Yağmur Beyaz /  
HG Rain White



630 HG Yağmur Kırmızı /  
HG Rain Red



624 HG Yağmur Siyah /  
HG Rain Black



672 HG Yıldızlı Beyaz /  
HG Star White



673 HG Yıldızlı Siyah /  
HG Star Black

AGT

Panel

Soft Touch





# SOFT TOUCH

Soft Touch'ın pastel renkleri ve ipeksi dokusu ile tanışınca, sadeliğin aslında ne kadar göz alıcı olabileceğini, tasarımda aradığınız o dokunuşu bulduğunuzu göreceksiniz.

*By the time you meet with Soft Touch's colors and velvet touch, you will explore the glamorous simplicity of design and ideal design that you were looking for.*

# TEKNİK ÖZELLİKLER / TECHNICAL SPECIFICATIONS

## Fiziksel ve Mekanik Testler / Physical and Mechanical Tests

ÖZELLİKLERİ / FEATURES	BİRİM / UNIT	DEĞER / VALUE	TEST METODU / TEST METHOD
<b>Yoğunluk</b> Density	kg/m <sup>3</sup>	7.7-12-16-18 mm: 750 ± 7% 22-25-30 mm: 720 ± 7%	EN 323
<b>Kalınlık Toleransı</b> Thickness Tolerance	mm	7.7-12-16-18 mm: ± 0,20 mm 22-25-30 mm: ± 0,30 mm	EN 324-1 EN 622-1
<b>En ve Boy Toleransı</b> Aspect Tolerance	mm/m	± 2 mm/m, maksimum ± 5 mm	EN 324-1 EN 622-1
<b>Karelik Toleransı</b> Squareness Tolerance	mm/m	2 mm/m	EN 324-2 EN 622-1
<b>Kenar Düzlüğü Toleransı</b> Side Smoothness Tolerance	mm/m	1.5 mm/m	EN 324-2 EN 622-1
<b>Kalınlıkta Şişme 24 Saat</b> Inflation in Thickness 24 Hours	%	7.7 mm ≤ 17% 12 mm ≤ 15% 16-18 mm ≤ 12% 22-25-30 mm ≤ 10 %	EN 317 EN 622-5
<b>Eğilme Dayanımı</b> Inflection Resistance	N/mm <sup>2</sup>	7.7 mm ≥ 23 N/mm <sup>2</sup> 12 mm ≥ 22 N/mm <sup>2</sup> 16-18 mm ≥ 20 N/mm <sup>2</sup> 22-25-30 mm ≥ 18 N/mm <sup>2</sup>	EN 310 EN 622-5
<b>İç Yapışma</b> Inner Adhesion	N/mm <sup>2</sup>	7.7 mm ≥ 0,65 N/mm <sup>2</sup> 12 mm ≥ 0,60 N/mm <sup>2</sup> 16-18-22-25-30 mm ≥ 0,55 N/mm <sup>2</sup>	EN 319 EN 622-5
<b>Formaldehit İçeriği</b> Formaldehyde Content	mg/100g	≤ 8 mg/100g	EN 120 EN 622-1
<b>Nem İçeriği</b> Humid Content	%	4 ÷ 11%	EN 322 EN 622-1

## ÜRETİM RENKLERİ / PRODUCTION DECORS



**734** Soft Touch Beyaz /  
Soft Touch White



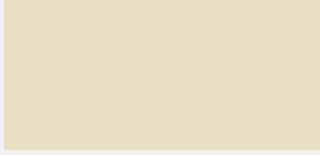
**736** Soft Touch Okyanus Mavi/  
Soft Touch Ocean Blue



**735** Soft Touch Su Yeşili /  
Soft Touch Relax Green



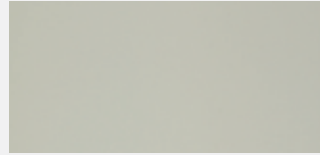
**723** Soft Touch Siyah /  
Soft Touch Black



**730** Soft Touch Krem /  
Soft Touch Cream



**727** Soft Touch Kum Beji /  
Soft Touch Beige Sand



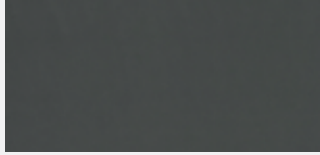
**729** Soft Touch Yeni Gri /  
Soft Touch New Grey



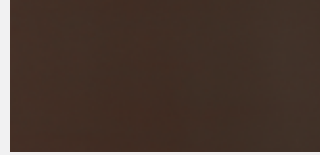
**732** Soft Touch Vizon /  
Soft Touch Vison



**728** Soft Touch Kaya Gri /  
Soft Touch Stone Grey



**726** Soft Touch Fırtına Gri /  
Soft Touch Storm Grey



**733** Soft Touch Mocca /  
Soft Touch Mocca

**AGT**

Power Gloss

Power Gloss







# POWER GLOSS

İşte tasarımlarınızda size ilham verecek parlak fikir. MDF-lam üzerine üstün lazer silindir teknolojsi ve UV lak uygulanarak üretilen Power Gloss, büyüleyici parlak renklere sahip, mekanik ve kimyasal direnci yüksek bir ürün...

*Here is a bright idea, that will inspire you!  
Power Gloss, which is manufactured by applying superior laser technology and UV Lac on MDF-lam, is a mechanically and chemically highly resistant product that owns charming, glossy decors.*

# TEKNİK ÖZELLİKLER / TECHNICAL SPECIFICATIONS

## Fiziksel ve Mekanik Testler / Physical and Mechanical Tests

ÖZELLİKLERİ / FEATURES	STANDART / STANDARD	SONUÇ / RESULT
<b>Leke Dayanımı (Kahve, alkol, aseton)</b> Stain Resistance (Coffee, alcohol, acetone)	EN 438-2	5 (Görüntüde değişme yok / No visible change)
<b>Çizilme Dayanımı</b> Scratch Resistance	EN 438-2	4N
<b>Aşınma Dayanımı</b> Abrasion Resistance	EN 438-2	250 cycles
<b>Ön Yüz Parlaklık</b> Top Surface Gloss	DIN 67 530 (60° glossmaster)	>90 GLE
<b>Çapraz Kesim</b> Cross Cut	EN ISO 2409:2007	Görüntüde değişme yok / No visible change
<b>Yüzey Sağlamlığı</b> Surface Soundness	EN 311	1,3 N/mm <sup>2</sup>
<b>Kuru Sıcaklığa Dayanım</b> Dry Heat Resistance	EN 438-2	5 (Görüntüde değişme yok / No visible change)
<b>Su Buharında Dayanım</b> Water Vapour Resistance	EN 438-2	5 (Görüntüde değişme yok / No visible change)
<b>Çatlama Testi</b> Cracking Resistance	EN 438-2	5 (Görüntüde değişme yok / No visible change)
<b>Eğilme Dayanımı</b> Bending Strength	EN 310	33 N/mm <sup>2</sup>
<b>Eğilme Elastikiyet Modülü</b> Modules of Elasticity Bending	EN 310	2870 N/mm <sup>2</sup>
<b>Yüzeye Dik Çekme</b> Tensile Strength Vertical to Surface	EN 319	0,77 N/mm <sup>2</sup>
<b>Vida Tutma (Kenar)</b> Resistance to Axial Withdrawal of Screws (Edge)	EN 320	1136 N/mm <sup>2</sup>
<b>Ölçü Toleransı</b> Measures Tolerance		±0,5mm
<b>Eğilme Toleransı</b> Bending Tolerance		2mm / 1m
<b>Düz Renklerde Ton Devamlılığı</b> Plain Colour Tolerance	CIElabCH D65/10°	ΔE ≤ 0,70
<b>Renk Haslığı</b> Colour Fastness, Resistance to Weathering for Furniture Indoor Application	EN ISO 4892-2 200 hour	DE < 1,7

## Levha Özellikleri / Board-Raw Material Features

<b>Levha Tipi / Board Type</b>	MDF (Medium Density Fiber Board)
<b>Levha Kalınlık / Board Thickness</b>	18mm
<b>Levha Yoğunluk / Board Density</b>	730 kg/m <sup>3</sup>
<b>Levha Ebat / Board Size</b>	1220mm x 2800mm
<b>Levha Ön Yüzü / Board Front Side</b>	<p>Lam levha üzerine farklı katmanlarda %100 UV akrilik lak uygulamasıyla, seri halde olan UV odalarında UV ışınlarının küreleştirilmesiyle oluşur. UV kaplama üründe çok parlak, düzgün ve çizilmeye karşı dayanımlı bir yüzey oluşmasını sağlar.</p> <p>AGT Power Gloss surface is 100% UV acrylic resin based decorative lacquer which is cured by UV (ultra violet) rays in a series of closed chambers. UV coating is a type of polished coating applied to MDF panel surface with melamine impregnated layer.</p>
<b>Levha Arka Yüzü / Board Back Side</b>	Lam kaplı / MDF panel surface with melamine impregnated layer.

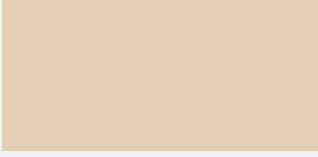
## Stok ve Kullanım Koşulları / Storage and Terms of Use

Stoklama sıcaklığı 10 °C ~ 30 °C. Uzun süreli direkt güneş ışığına ve ısıca maruz kalmamalıdır. Yüzey temizliği ılık sabunlu su ile yapılmalıdır. Alkol, solvent, tiner ya da aşındırıcı yüzey temizleme malzemeleri ile temizlik yapılmamalıdır.

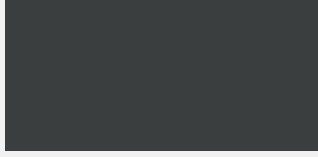
Storage temperature is between 10 °C ~ 30 °C. Do not expose to direct sunlight and other sources of heat for long time. Clean with a soft cloth, using water with mild soap. Do not use any cleaners containing alcohol, solvents, thinner or abrasives.

# ÜRETİM RENKLERİ / PRODUCTION DECORS

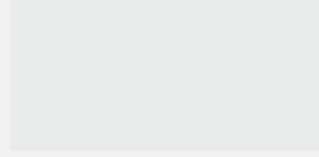
## 1. Grup / First Group



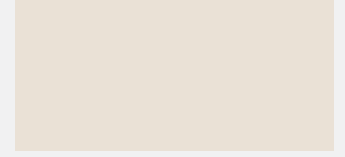
1003 Krem / Cream



1005 Siyah / Black



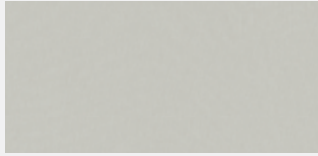
1006 Elite Beyaz / Elite White



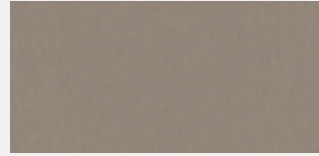
1008 Bianco / Bianco



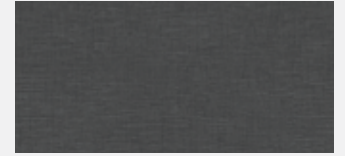
1009 Yeni Vison / New Vison



1022 Açık Tessuto / Light Tessuto



1023 Koyu Tessuto / Dark Tessuto



1025 Venüs / Venus



1036 Esse / Esse



1037 Volcano / Volcano

# ÜRETİM RENKLERİ / PRODUCTION DECORS

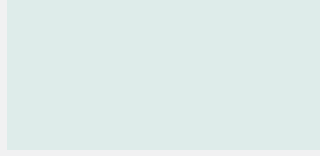
## 2. Grup / Second Group



1002 Cappuccino / Cappuccino



1004 Yeni Antrasit / New Anthracite



1007 Kristal Beyaz / Crystal White



1010 Mürdüm / Damson



1011 Turuncu / Orange



1012 Fıstık Yeşil / Pistachio Green



1020 Fildişi Keten / Ivory Linen



1021 Kahve Keten / Coffee Linen



1024 Karya / Kayra



1031 Hasır / Wicker



1032 Matrix / Matrix



1033 Nepal / Nepal



1034 Lotus / Lotus

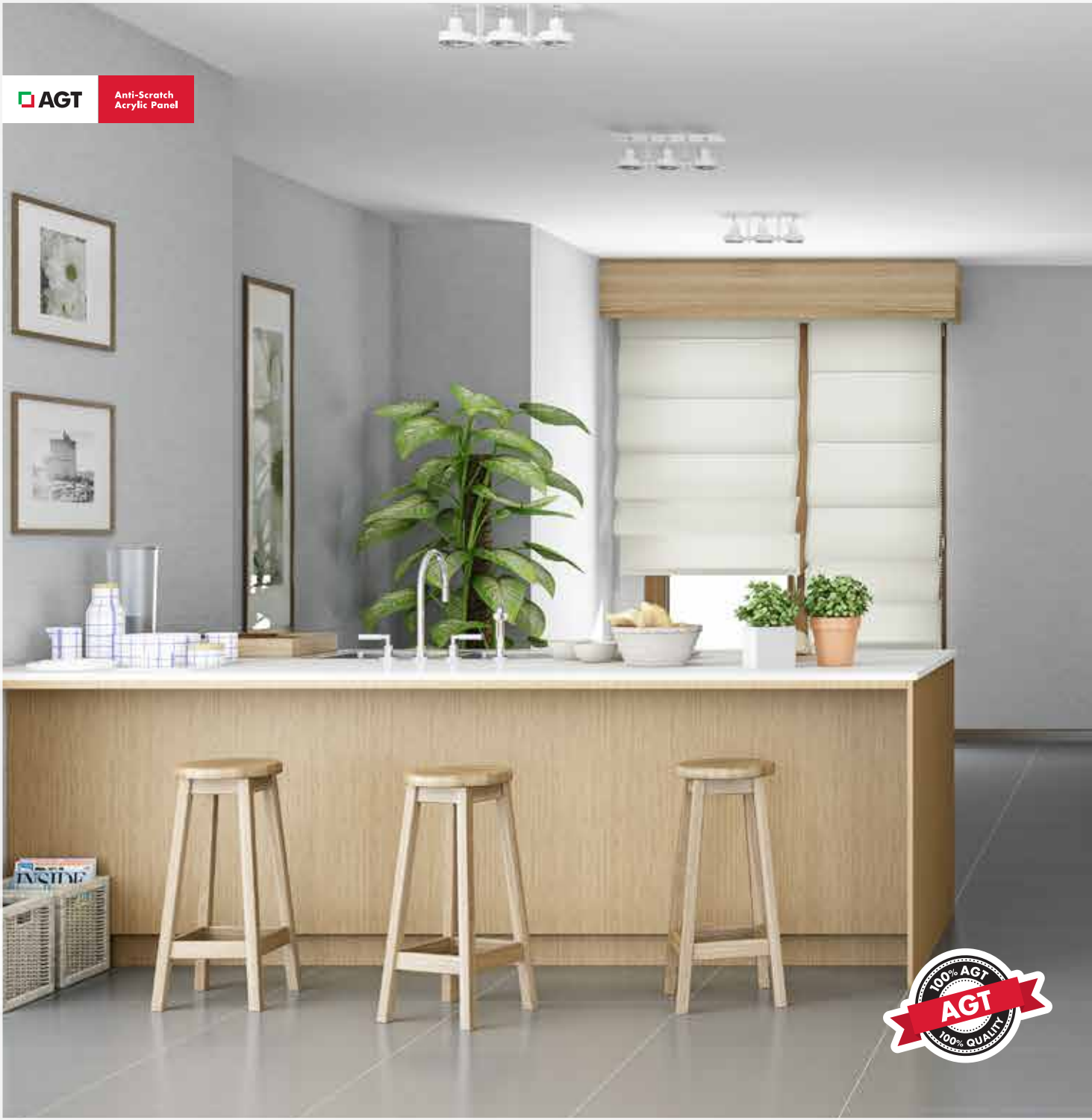


1035 Dama Gri / Checkers

AGT

Anti-Scratch  
Acrylic Panel

Çizilmez Akriik / Anti Scratch



# ÇİZİLMEZ AKRİLİK ANTI SCRATCH

Dayanıklılık onun özünde var. AGT Akrilik Panel, üst yüzey kalınlığı, homojen ve monoblok yapısıyla yıllara meydan okuyor, pürüzsüzlüğünden ödün vermiyor.

*Durability is in its core. AGT Acrylic panel, with its upper surface thickness, homogeneous and monoblock structure, wears well, do not compromise from its smoothness.*

# TEKNİK ÖZELLİKLER / TECHNICAL SPECIFICATIONS

## Fiziksel ve Mekanik Testler / Physical and Mechanical Tests

ÖZELLİKLERİ / FEATURES	TEST METODU TEST METHOD	BİRİM / UNIT	DEĞERLER / VALUE
<b>Kalınlık</b> Thickness		mm	Bej, Beyaz = 0,7mm / Kırmızı, Mürdüm, Bordo, Siyah, Gri =0,8mm / Metalik Gri: 1 mm Beige, White = 0,7mm / Red, Damson, Bordeaux, Black, Grey =0,8mm / Metallic Grey: 1 mm
<b>Kuru Isı Dayanımı</b> Resistance to Dry Heat	DIN 68861/T7	°C	75
<b>Islak Isı Dayanımı</b> Resistance to Wet Heat	DIN 68861/T8	°C	70
<b>Yüzey Parlaklığı</b> Top Surface Gloss	DIN 67 530 (60° glossmaster)		>85 GLE
<b>Renk Haslığı Dayanımı (UV Dayanımı)</b> (İç mekân uygulamaları için) Color Fastness Resistance (UV Resistance) (For interior space applications)	EN ISO 4892-2 200 Saat Xenon, Renk Değişimi EN ISO 4892-2 200 Hour Xenon, Color Change		DE<1,7
<b>Çizilmezlik</b> Scratch Resistance	EN 438-2	4 N	

## Leke Tutma Dayanımları (DIN68861 test methoduna göre) / Chemical Resistance DIN 68861

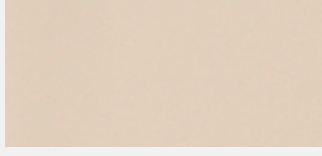
TEST MALZEMESİ TEST MATERIAL	TEST BEKLEME SÜRESİ WAITING TIME	DERECELENDİRME EVALUATION
<b>Asidik Asit / Acidic Acid</b>	1 saat	5
<b>Sodyum Karbonat / Sodium Carbonate</b>	2 dakika	5
<b>Sıvı Amonyak / Liquid Ammonia</b>	2 dakika	5
<b>Kolalı İçecekler / Cola Drinks</b>	16 saat	5
<b>Kahve Tozu / Coffee Powder</b>	16 saat	5
<b>Yoğunlaştırılmış Süt / Condensed Milk</b>	16 saat	5
<b>Su / Water</b>	16 saat	5
<b>Aseton / Acetone</b>	10 saniye	2
<b>Zeytinyağı / Olive Oil</b>	16 saat	5
<b>Yemek Tuzu / Salt</b>	6 saat	5
<b>Temizleme Malzemeleri / Cleaning Supplies</b>	1 saat	5



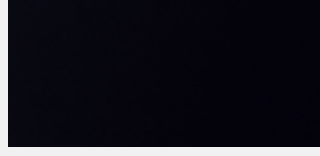
# ÜRETİM RENKLERİ / PRODUCTION DECORS



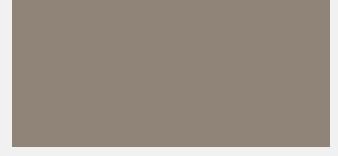
8015 Beyaz / White



8016 Krem / Cream



8018 Siyah / Black



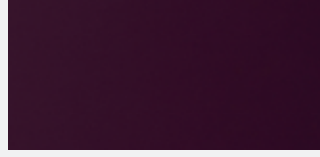
8017 Vizon / Vison



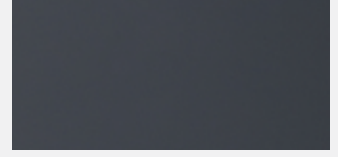
8031 Sarı / Yellow



8019 Kırmızı / Red



8020 Mürdüm / Damson



8021 Antrasit / Anthracite



8022 Safir Beyaz / Carbon Glass

**\*Arka yüzeyler, ön yüzeyler ile aynı renkte üretilmektedir.**

**\*Front and back surfaces are produced with same colors.**

Folyo kalınlığı / Foil Thickness: 2mm | Çizilmezlik Katsayısı / Scratch Resistance: 2N

**AGT**

Anti-Scratch  
Acrylic Panel





**Merkez | Head Office**

Organize Sanayi Bölgesi  
3.Kısım, 35. Cadde 07190  
Döşemealtı, Antalya, Turkey  
Tel: +90 242 249 17 17  
Fax: +90 242 249 17 27  
agt@agt.com.tr

**İstanbul Ofis | Istanbul Office**

Kısıklı Mah. Alemdağ Caddesi  
No: 36 34692 Çamlica,  
İstanbul, Turkey  
Tel: +90 216 344 82 48  
Fax: +90 216 316 82 48  
istanbul@agt.com.tr

**agt.com.tr**

     /agtthinkwithus